

Owl Class Curriculum Newsletter

Autumn 2024

'Time Travellers'



Welcome to the new school year in Owl Class. We have been very busy settling back into our class routines and welcoming new learners into class. As you will see, we have a very busy term planned.

The staff in Owl Class are:

Dawn Taylor (Teacher)

Zoe Simpson (HLTA: Tues)

Mrs Emily Corbett (TA)

Mr George Langman (TA)

Abby Sibley (TA)

Mrs Katrina Tutty (SNSW)

Mrs Linda Cooper (SNSW)

Mrs Donna Aston

Mrs Sivia Carbury

(Dinner Supervisors)

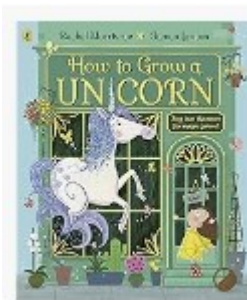
Please don't hesitate to contact us by email : Towls@old-park.dudley.sch.uk or using School Life.

Some Important Information:

- Please ensure your child's belongings are labelled with their name or initials. This includes bags, snack boxes, drink bottles, jumpers, coats and swimming kits.
- Our swimming day is Monday: please send in a labelled swimming kit, with a washable swimming pad (if pads are worn in school).
- Our P.E day is Wednesday: Learners can come to school in their P.E. kit. (No uniform is necessary)
- Snack/Lunch: Please do your best to send in a healthy snack/lunch box (labelled) and please remember, we are a **nut free** school. If you send in a drinks bottle, they will be returned at the end of the day to be washed at home.

Early English and English

The reading genre this term is Myths and Legends. We are using the stories 'How to grow a Unicorn' and 'The Oak Tree'. Learners will be familiar with characters, settings and events having read the story using a story sack. This gives them the opportunity to experience objects, sounds, smells and also pictures/symbols/written words. They will become familiar with and anticipate events in the stories with the support of a total communication approach. We continue to follow the 'Little wandle' phonics programme each day.



Writing instructions on how to construct and Acrostic poetry

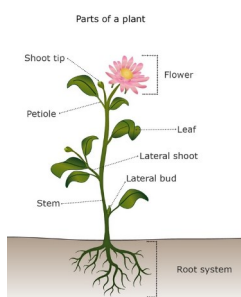
Learners will have the opportunity to express themselves in practical ways, combining music and movement as well as using pictures/symbols and words to create meaning. They will take part in fine and gross motor skill activities that are repeated. Learners will work towards a set of identified skills using a range of resources. They will begin to use symbols/pictures/objects/mark making and writing to record their ideas and choices. Learners will read or follow instructions and demonstrate their own ideas in practical ways or by using symbols/words to write their own instructions.

Early Maths and Maths



In the first half term we will be learning about early place value, number recognition and representing amounts. We will be demonstrating our learning in practical ways using everyday activities, songs and by beginning to record our own findings. Numicon number activities will be used. We will explore length and height using standard and non-standard units of measure. In the second half term we will concentrate on the concepts of addition and subtraction, again using practical activities. We will also use money in real and play situations, learn to recognise currency and use coins to count out or match amounts.

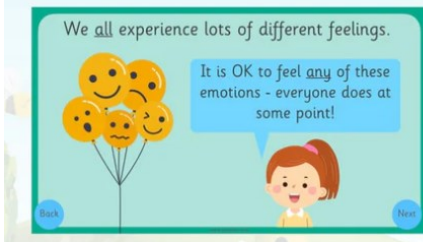
Early Science and Science



This term our learning theme is 'Plants and animal habitats'. We are learning that plants are all around us and they have specific parts and structure (including for reproduction). We will explore a variety of natural materials and identify and name a variety of common wild and garden plants, including deciduous and evergreen trees; identify and describe the basic structure of a variety of common flowering plants, including trees. We are learning that plants have basic needs for survival and different habitats provide different conditions for plants - that most living things live in habitats to which they are suited and describe how different habitats provide for the basic needs of different kinds of animals and plants, and how they depend on each other.

PSHE

How Do I Feel?



Our themes this term are 'Strong Feelings' and 'Managing stress'

Learners will engage in activities that support them to identify emotions in themselves and others, how people express their feelings, how to communicate about how they feel and ask for support when needed. The class will look at practical ways we can manage stress.

History



Through practical activities, role play, art and cooking, this half term we are learning about the Normans and Anglo Saxons in the times before and after the Battle of Hastings. In the the second half term we will move on to learning about the Tudor times, explorers and the discovery of the 'New world'.



Computing

We are partly focusing on operating switch devices using different technology. We will also learn about the internet and it's uses e.g. to communicate, shop, extract information. Learners will research a favourite topic using the internet. During the second half term we will explore pictograms and charts. Learners will collect their own data on a topic and transfer this onto a chart.

Art & Design/DT/Music

We will be exploring the theme of Story Telling through art using the work of our Focus artist/Mia Hansson (embroidery, drawing and story-telling) and also for inspiration, the Bayeux Tapestry. Through the media of drawing, painting and textiles.

In Music we will continue to follow the Cheranga Music Schemes. We will identify, choose and play instruments and explore producing different sounds, beats, stop and play, solo and group performances. After half term we are looking forward to music enrichment with Del from Dudley Performing Arts.

P.E.

In P.E we will follow routines of warm -up and cool down activities. We will be developing our skills in throwing, catching, moving with a ball, aiming , scoring and also attack and defence in invasion games. Learners will further develop gross motor and spatial skills.